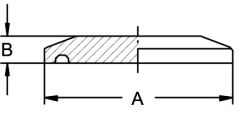
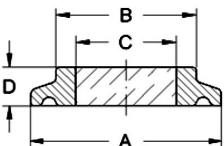
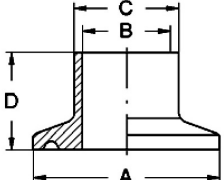


Clamp pipe connection DIN 32676, flange Ø 34–319							Art.No	EUR	Art.No	EUR
Blind clamp flange 	DN	A	B	ASME	ISO-DN		AISI316L-1.4404		AISI316L-1.4435	
	10-20	34	6,35	-	-		230260	13,20	232360	Enquiry
	25-40	50,5	6,35	1"-1,5"	21,3-33,7		230216	15,40	232316	Enquiry
	50	64	6,35	2"	42,4-48,3		230205	18,20	232305	Enquiry
	2,5"	77,5	6,35	2,5"	60,3		230206	27,30	232306	Enquiry
	65	91	6,35	3"	76,1		230207	34,90	232307	Enquiry
	80	106	6,35	-	88,9		230238	43,30	232338	Enquiry
	100	119	8	4"	-		230208	53,20	232308	Enquiry
	115 *	130	8	4,5"	114,3		230209	100,50	232309	Enquiry
	125	155	8	5,5"	139,7		230241	107,50		
	150	183	14	6,6"	168,3		230242	133,80		
	200	233,5	14	8,6"	219,1		230244	230,20		
	250 *	268	14	10"	-		230246	300,90		
300 *	319	14	12"	-		230248	361,40			

* Similar to DIN 32676

Clamp sight glass, fused 	DN	A	B	C	D	bar	1.4462 Borosilicate			
	10-20	34	21	12	7	16		231160	159,90	
	25-40	50,5	41	25	10	16		231116	169,20	
	50	64	52	30	10	16		231105	182,20	
	2,5"	77,5	69	35	10	10		231106	202,40	
	65	91	76	40	10	10		231107	238,50	
	80	106	90	50	10	10		231138	272,30	
	100	119	100	55	12	10		231108	337,60	
	115	130	114	60	16	10		231109	497,80	
	125	155	30	65	16	6		231141	629,60	
	150	183	160	75	16	6		231142	746,80	
	200	233,5	210	100	18	6		231144	967,20	
	250	268	245	120	20	6		231146	1.232,00	
300	319	300	140	22	6		231148	1.842,50		

-30 °C up to 280 °C

Clamp ferrule DIN, short 	DN	A	B	C	D	AISI316L-1.4404		AISI304	
	10	34	10	13	18	230730	17,40	230630	14,30
	15	34	16	19	18	230731	17,40	230631	14,30
	20	34	20	23	18	230732	17,40	230632	14,30
	25	50,5	26	29	21,5	230733	19,70	230633	18,40
	32	50,5	32	35	21,5	230734	20,40		
	40	50,5	38	41	21,5	230735	21,80	230635	19,80
	50	64	50	53	21,5	230736	23,10	230636	20,60
	65	91	66	70	28	230737	33,80	230637	23,70
	80	106	81	85	28	230738	51,20	230638	45,10
	100	119	100	104	28	230739	70,40	230639	56,30
115 *	130	109,7	114,3	28	230709	109,70	230609	96,70	

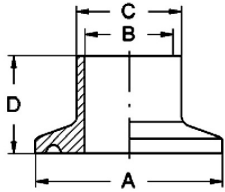
* Similar to DIN 32676

Clamp pipe connection DIN 32676, flange Ø 34–319

Art.Nr. EUR Art.Nr. EUR

Clamp ferrule DIN, short

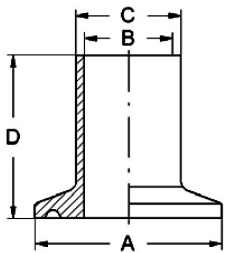
DN	A	B	C	D	AIS316L-1.4404		AISI304	
125	155	125	129	28	230741	165,20	230641	121,80
150	183	150	154	28	230742	208,40	230642	157,30
200	233,5	200	204	28	230744	282,60	230644	267,50
250 *	268	250	254	28	230746	429,90		
300 *	319	300	304	28	230748	629,50		



* Similar to DIN 32676

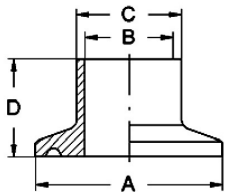
Clamp ferrule DIN, long

DN	A	B	C	D	AIS316L-1.4404		AIS316L-1.4435	
10	34	10	13	28,6	237630	Enquiry	232430	Enquiry
15	34	16	19	28,6	237631	Enquiry	232431	Enquiry
20	34	20	23	28,6	237632	Enquiry	232432	Enquiry
25	50,5	26	29	36	237633	Enquiry	232433	Enquiry
32	50,5	32	35	36	237634	Enquiry	232434	Enquiry
40	50,5	38	41	36	237635	Enquiry	232435	Enquiry
50	64	50	53	36	237636	Enquiry	232436	Enquiry
65	91	66	70	48	237637	Enquiry	232437	Enquiry
80	106	81	85	48	237638	Enquiry	232438	Enquiry
100	119	100	104	48	237639	Enquiry	232439	Enquiry
125	155	125	129	66	237641	Enquiry	232441	Enquiry
150	183	150	154	66	237642	Enquiry	232442	Enquiry
200	233,5	200	204	66	237644	Enquiry	232444	Enquiry



Clamp ferrule ASME, short

DN	A	B	C	D	AIS316L-1.4404		AISI304	
1"	50,5	22,1	25,4	21,5	239103	20,80	239003	17,90
1,5"	50,5	34,8	38,1	21,5	239104	22,90	239004	19,30
2"	64	47,5	50,8	21,5	239105	25,30	239005	20,80
2,5"	77,5	60,2	63,5	28	239106	29,70	239006	27,90
3"	91	72,9	76,2	28	239107	52,50	239007	48,40
4"	119	97,38	101,6	28	239108	73,80	239008	61,70
4,5" *	130	109,7	114,3	28	239109	109,70	239009	96,70
5,5" *	155	134,5	139,7	28	239110	166,80	239010	132,00
6,6" *	183	163,1	168,3	28	239111	232,00	239011	171,50
8,6" *	233,5	213,9	219,1	28	239112	289,50	239012	254,80
10" *	268	250	254	28	239146	429,90		
12" *	319	300	304	28	239148	629,50		



* Similar to DIN 32676